

National **NAWGJ***News*

News for Artistic Gymnastic Judges

January 2003

In this issue . . .

NAWGJ Governing
Board Minutes
2, 16-17

NCAA Rules
3-4

NCAA Vault Table
5-6

Library Order Form
7

NAWGJ Warm-up
Order Form
8

Changes in J.O.
Program
2002-2003
9-15

Dear Judge Poem
15

NAWGJ
Mission Statement
18

Judges' Honorary Diploma

"In recognition of long term contribution and dedication as an international judge at the world level"

The criteria for the Judges' Honorary Diploma are five (5) Brevet cycles and eight (8) FIG competitions. The FIG competitions that are considered to meet the FIG competition criteria are: Olympic Games, World Championships and World Cup Finals.

The United States has four judges who have been honored. They are:



Jackie Fie
Brevet since 1968



Delene Darst
Brevet since 1973



Linda Chencinski
Brevet since 1977



Audrey Schweyer
Brevet since 1978

NAWGJ

National Governing Board Minutes

Albuquerque, New Mexico

June 27-28, 2002

The President called the meeting to order at 9:00 a.m., June 27th.

Attendance

President	Carole Ide
Vice President	Judy Grenfell
Sec/Treasurer	Betty Sroufe
Region I	Janet Packwood/Joan Geel
Region II	Cindy Lord
Region III	Mary Lee Martin
Region IV	Robin Ruegg
Region V	Carole Liedtke
Region VI	Pat Panichas — arrived Thursday afternoon
Region VII	Amy Rager
Region VIII	Sheila Ragle — absent
Librarian	Judy Dobransky
Judges' Cup Dir.	Patty Shipman, SJD Meeting
Guest	Arthur Melendrez, attorney
Guest	Marian Dykes

The minutes were approved with the following changes:

1. Change "fee structure" to "USAG Fee Structure".
2. Add to the first motion regarding financial reports — Region 4 abstained.
3. Change "Internet Report" to Website Report." (Ruegg/Rager)

A thank you note was received from Evelyn Chandler for the gift acknowledging her years of service to NAWGJ. Past RJD's Evelyn Chandler and Genie McElroy have been awarded 4 year memberships, through 2005.

Reports — Copies of the President's report, the Secretary/Treasurer's Report and the Regional Reports were distributed. The Vice President's topics are on the agenda. The President asked the RJD's to insure that bank phone numbers are included with all financial reports.

Old Business

Administrative Assistant — The Administrative Assistant position was revisited. **MOTION:** The administrative assistant office will be abolished, with the duties being divided between the President and Vice President. (Packwood/Sroufe — carried)

MOTION: The following duties will be assigned to the Vice President:

1. Record and distribute minutes to the National Governing Board members within three weeks of said meetings.
2. Conduct elections of Regional and National Directors.
3. Be available to the President for assistance. This

assistance may be in the form of updating the Constitution and Operating Code, Judging Director's Handbook, or other such materials.

(Ruegg/Lord — carried)

MOTION: The following duties will be assigned to the President:

1. Maintain and publish an annual NAWGJ Governing Board Directory every four years.
2. Be responsible for communications, such as newsletters, from the National office to the State Judging Directors.

(Lord/Liedtke — carried)

Uniforms. — The Vice President reported on behalf of Midway Uniform. Membership should be aware that the national sizing standards for women's clothing were changed a few years ago. Therefore, members ordering a new uniform may find that the same size doesn't fit. Other fitting problems were attributed to the member not ordering the same style as before. New members who have tried on the uniforms of others, have had the same fitting problems. Members should deal with Jennifer at the Midway office if they have questions about sizing. NAWGJ will continue using Midway as our uniform supplier.

Symposium

The Vice President reported on the National Symposium

Continued on page 16

NAWGJ News is published by the National Association of Women's Gymnastic Judges

Governing Board

Carole Ide President	Judy Dobransky National Librarian
Judy Grenfell Vice President	Judy Hoeferlin Newsletter Editor
Betty Sroufe Secretary-Treasurer	

Regional Judging Directors

Region I Joan Geel/Janet Packwood	Region V Carole Liedtke
Region II Cindy Lord	Region VI Pat Panichas
Region III Mary Lee Martin	Region VII Amy Rager
Region IV Robin Ruegg	Region VIII Shelia Ragle

2003 NCAA WOMEN'S GYMNASTICS RULES

The National Collegiate Women's Championships and all meets used to qualify will be conducted according to the FIG Women's Code of Points, with the Junior Olympic (Level 10) modifications as of 11/1/02. [Note: If the value of a skill (JO) on events other than vaulting is raised after 11/1/02, it will be effective immediately.] All rules and guidelines for execution and compositional deductions as applied to the USAG-JO program (Level 10) will be used with the following collegiate modifications/clarifications:

GENERAL

.10 deduction for competing out of order (taken from team score).

VAULT

- Teams & individuals must compete using a new vault table apparatus during any regular season meet used in calculating RQS.
- Collegiate Vault Value Chart (Effective September, 2002)
- Gymnasts will perform one vault, the score of which will count. A gymnast will be afforded three attempts to go over the horse one time. Touching the board and/or the horse, without going over the horse, counts as one of the three attempts.
- No deduction if gymnast's lead arm bends during a ¼ on or Tsukahara entry vault. Deduct for bending of second arm.
- 1.00 deduction for touching the horse with only one or with no hands.
- 1.00 deduction for failure to land on feet first. (includes fall)
- 1.00 deduction for spotting assistance during the vault.

UNEVEN PARALLEL BARS

SPECIAL REQUIREMENTS (taken off of the start value as always):

1. Two bar changes
2. One flight element minimum of "C"
3. A different flight element minimum of "B"
4. "C" dismount with the following modifications:
 - a. "B" dismount = .10 deduction (not .2)
 - b. "C" dismount immediately preceded by same two "A" elements or same two "B" elements = .1 deduction (not .2)

BEAM

SPECIAL REQUIREMENTS (taken off of the start value as always):

1. Acro series, minimum of 2 flight elements, both must start and finish on the beam
2. Dance or Dance/Acro series of 2 or more elements
3. Minimum of 360 degree turn on one foot or knee
4. Leap, jump or hop requiring 180 degree split (front or side)
5. "C" dismount or
"B" dismount preceded by and directly connected to any "C" element (acro or dance) with the following modification:
 - a. "B" dismounts not meeting the connection requirement will receive a .1 deduction (not .2)

Note: A minimum "C" element performed a third time (no VP) may be used to fulfill S.R. 5 on beam.

COMPOSITION

Mounts (Group 1) may be used to fulfill the forward or sideward acro element

ELEMENT VALUES DIFFERENT FROM LEVEL 10:

1. #2.307 Stag-ring leap or jump = D
2. #8.301 Salto forward take off from one leg = D
3. #8.304 Salto backward stretched with step-out = D
4. #8.305 Gainer salto backward stretched, also with leg change in flight = D
5. #8.404 Salto backward stretched throughout (no pike down) with legs together = E
Salto backward stretched through vertical and then pike down, with legs together = D
Salto backward stretched and then pike before vertical, with legs together = C (pike)
6. #9.108 Gainer salto stretched with ½ twist, to side of beam = B (tuck & pike = A); In collegiate program, same values when gainers are performed forward.
7. #S9.202 Stand on 1 leg – swing free leg backward to a front aerial with 1/1 twist in stretched position off side of beam = C
8. #9.208 Gainer salto backward stretched with 1/1 twist, to side of beam = C (tuck "B")
9. #9.407 Double salto backward tucked or piked = E

CONNECTION VALUE EXCEPTIONS:

B+D Acro Flight

- a. BHS(any with 2 arms)+ Layout step-out = no connection value

B+E Acro Flight

- a. BHS(any with 2 arms)+ Layout with feet together = +.10 (not +.20)

B+B+D 3 Acro Flight Elements

- a. Any variation or order of 2 BHS's (any with two arms) and a layout step-out = +.10 (not +.20)

FLOOR

SPECIAL REQUIREMENTS (taken off of the start value as always):

1. One acro series (3 flight elements, 1 a salto)
2. Another acro series, with 2 saltos (same or different)
3. 3 different saltos within the exercise
4. Minimum 360 degree turn on one foot ("B" not required)
5. Dance series of 2 or more leaps, jumps or hops (one foot take off not required)
6. "C" dismount with the following modifications:
 - a. "B" dismounts will receive a .10 deduction (not .2)

Note: Minimum of "C" salto performed as the last isolated salto or in the last salto connection.

COMPOSITION

1. Maximum of two prone landings will be allowed. One from dance and one from acro elements.
2. **1 ¼ saltos to prone landing will be valued one level higher than landing on feet and are considered saltos for SR & AV**

ADDITIONAL COLLEGIATE RULES

EQUIPMENT

1. Low bar must be adjustable to 165 cm and the high bar adjustable to 245 cm without the bar height adapters.
2. ½" plywood may be used under the springboard for mounting bars and beam.
3. If a gymnast has a broken/torn grip, she may repeat her routine as the last team competitor or after the all-around competitor (specialist). If this does not allow for a sufficient amount of time to change grips or enough time to prepare, the gymnast will repeat the routine as soon as it is safe to do so. However, the time should not exceed five minutes. [Note: Common sense and safety must always prevail.]
4. A chalk arc line may be placed on the corners of the floor exercise mat.
5. Except for a small mark, chalk may not be applied directly to the beam. A small amount of chalk may be applied to the gymnasts' hand and feet as needed for safety.
6. If a mat used on floor exercise exceeds the boundary lines, the mat must be clearly marked with tape or chalk to indicate the actual boundary lines. Failure to mark the mat will result in a .10 deduction taken off the average.
7. The maximum run distance for mounts on uneven bars and balance beam during championships competition is 27 ½'. If more than 27 ½' of matting exists, the maximum run distance must be marked.

RULES

1. Reminder: Landing deductions are taken for lack of control and/or movement occurring prior to presenting to the judges. (e.g., celebrating on the mat prior to presenting to the judges, failing to show a controlled landing prior to turning to present to the judges)

SCORING

1. Open scoring is required and start values must be flashed. [Note: judges are to sit apart; all judges' scores will be flashed, simultaneously, with only the average raised.]
2. Reminder: The allowable score range between the two counting scores follows JO.

UNIFORM

1. During the 2003 championships, long-sleeve, short-sleeve or sleeveless (including backless) one-piece leotards are permitted. Swimsuit apparel is permitted during practice and warm-up at championship events during the 2003 season, provided the apparel meets all other uniform regulations, including those outlined in the Championships Handbook.
2. Deduction of .10 for leotard above the hip bone. A warning must be given first.
3. There is no deduction for a matching (i.e., color of leotard or nude in color) sports bra that is exposed. During championships competition, gymnasts must wear trunks that match the color of the leotard or be nude in color.
4. A gymnast who does not meet the uniform policies will be instructed by the meet referee that she is "out of uniform" and must comply with the uniform rules prior to returning to the competition.

2003 Collegiate Vault Table

Group 1 - Handsprings, Yamashitas & Cartwheels

1.101	Handspring		8.8
1.102	Handspring	1/2 turn	8.8
1.104	Yamashita		8.8
1.105	Yamashita	1/2 turn	9.0
1.106	1/2 on	1/2 off	8.9
1.202	Handspring	1/1	9.2
1.205	Yamashita	1/1	9.3
1.206	1/2 on	1/1	9.1
1.207	1/1 on	Handspring	9.6
S1.210	1/1 on	1/2	9.6
1.302	Handspring	1 1/2	9.5
1.306	1/2 on	1 1/2	9.5
1.307	1/1 on	1/1 off (H/Y)	9.8
1.402	Handspring	2/1	10.0
1.406	1/2 on	2/1	9.9
C1.407	1/2 on	2 1/2	10.0
S1.410	1/1 on	1 1/2	10.0
C1.411	1/1 on	2/1	10.0
1.502	Handspring	2 1/2	10.0
1.503	Handspring	3/1	10.0
1.505	Yamashita	2 1/2	10.0

Group 2 - Cuervos & Saltos Forward

2.301	Handspring	Front Tuck	9.8
2.302	Handspring	Front Tuck 1/2	9.9
2.303	Handspring	1/2 Back Tuck	9.9
S2.305	Fr.hdspg onto board		
	to fr.hdspg onto horse	Front Tuck (Illeg)	9.9
C2.306	Fr.hdspg onto board		
	to fr.hdspg onto horse	Front Tuck 1/2	10.0
C2.307	Fr.hdspg onto board		
	to fr.hdspg onto horse	Front Pike	10.0
2.402	Handspring	Front Tuck 1/1	10.0
2.403	Handspring	1/2 off, Back 2/ 1/2+	10.0
2.404	Handspring	Front Pike	9.9
2.405	Handspring	Front Pike 1/2	10.0
2.406	Handspring	1/2 Back Pike	10.0
2.501	Handspring	Double Front	10.0
2.502	Handspring	Front Tuck 1 1/2	10.0
2.507	Handspring	Front Layout	10.0
2.508	Handspring	Front Layout 1/2	10.0
2.509	Handspring	1/2, Back Layout	10.0
2.510	Handspring	Front Layout 1/1	10.0
2.511	Handspring	Front Layout 1 1/2	10.0
2.512	Handspring	Front Layout 2/1	10.0
2.513	1/1 on	Front Tuck	10.0
2.514	1/1 on	Front Pike	10.0
2.515	1/1 on	Front Layout	10.0

Group 3A - Tsukaharas^{*#}

C3.101	Tsukahara	Handspring (timer)	8.8
3.201	Tsukahara	Tuck	9.5
3.303	Tsukahara	Pike	9.6
3.305	Tsukahara	Layout	9.8
S3.310	Tsukahara	Tuck 1/2	9.7
S.3.311	Tsukahara	Pike 1/2	9.8
S3.312	Tsukahara	Layout 1/2	9.9
3.402	Tsukahara	Tuck 1/1	9.9
3.403	Tsukahara	Tuck 1 1/2	10.0
3.405	Tsukahara	Layout 1/1	10.0
3.501	Tsukahara	Double Back Tuck	10.0
3.504	Tsukahara	Double Back Pike	10.0
3.505	Tsukahara	Back Layout 1 1/2	10.0
3.506	Tsukahara	Back Layout 2/1	10.0

Group 4 - Round-Off Entry (Yurchenko)

C4.101	RO, FF	Handspring (timer)	8.8
4.201	RO, FF	Back Tuck	9.5
S4.210	RO, FF 1/2	1/1 Twist Off	9.3
S4.211	RO, FF 1/2	1 1/2 Twist Off	9.5
4.302	RO, FF	Back Tuck 1/1	9.8
4.303	RO, FF	Back Pike	9.6
4.304	RO, FF	Back Layout	9.8
4.306	RO, FF	1/2 off, Front Tuck	9.8
4.307	RO, FF	1/2 off, Front Pike	9.9
4.315	RO, FF 1/1	1/1 Twist Off	9.7
C4.316	RO, FF 1/1	1 1/2 Twist Off	9.9
C4.317	RO, FF 1/1	2/1 Twist Off	10.0
C4.318	RO, FF 1 1/2	1/1 Off	10.0
S4.320	RO, FF	Back Tuck 1/2	9.6

Group 3B - 1/2-On Entry Vaults**

3.407	1/2 on	1/2 off, Front Tuck	9.9
3.408	1/2 on	1/2 off, Front Pike	10.0
S3.507	1/2 on	1/2 off, Front Layout 1/2	10.0
3.508	1/2 on	1/2 off, Front Layout	10.0
S3.509	1/2 on	1/2 off, Front Tuck 1/2	10.0
3.510	1/2 on	1/2 off, Front Tuck 1/1	10.0

Group 4 - Round-Off Entry (Yurchenko)

S4.321	RO, FF	Back Pike 1/2	9.7
S4.322	RO, FF	Back Layout 1/2	9.9
S4.323	RO, FF	1 1/2 Twist Off	9.5
4.402	RO, FF	Back Tuck 1 1/2	10.0
4.404	RO, FF	Back Layout 1/1	10.0
4.407	RO, FF	1/2 off, Front Layout	10.0
4.408	RO, FF 1/2	Front Tuck	9.9
4.409	RO, FF 1/2	Front Tuck 1/2	10.0
4.410	RO, FF 1/2	1/2 off, Back Tuck	10.0
4.411	RO, FF 1/2	Front Pike	10.0
4.415	RO, FF 1/1	Back Tuck	10.0
S4.420	RO, FF 1/2	2/1 Twist Off	10.0
S4.421	RO, FF	2/1 Twist Off	9.9
4.501	RO, FF	Double Back Tuck	10.0
4.502	RO, FF	Back Tuck 2/1	10.0
4.503	RO, FF	Double Back Pike	10.0
4.504	RO, FF	Back Layout 1 1/2	10.0
4.505	RO, FF	Back Layout 2/1	10.0
4.511	RO, FF 1/2	Front Pike 1/2	10.0
4.512	RO, FF 1/2	1/2 off, Back Pike	10.0
4.513	RO, FF 1/2	Front Layout	10.0
4.514	RO, FF 1/2	Front Layout 1/2	10.0
4.515	RO, FF 1/1	Back Pike	10.0
4.516	RO, FF 1/1	Back Layout	10.0

Group 3C - 1/4-On Entry Vaults#

C3.307	1/4 on	1/4 off, Front Tuck	9.8
C3.308	1/4 on	1/4 off, Front Tuck 1/2	9.9
C3.309	1/4 on	1/4 off, Front Pike	9.9
C3.409	1/4 on	1/4 off, Front Pike 1/2	10.0
C3.511	1/4 on	1/4 off, Front Layout	10.0
C3.512	1/4 on	1/4 off, Front Layout 1/2	10.0
C3.410	1/4 on	3/4 off, Front Tuck	9.9
C3.411	1/4 on	3/4 off, Front Tuck 1/2	10.0
C3.412	1/4 on	3/4 off, Front Pike	10.0
C3.413	1/4 on	3/4 off, Front Pike 1/2	10.0
C3.512	1/4 on	3/4 off, Front Layout	10.0
C3.513	1/4 on	3/4 off, Front Layout 1/2	10.0

Footnotes & Additional Collegiate Vaulting Rules

* Tsukahara vaults may be performed with 90°-180° LA turn in 1st phase

** 1/2-on entry vaults must be performed with 180° LA turn in 1st phase

No deduction for bent lead arm when performing Tsukahara or 1/4-on entry vaults on the new vault table.

1.00 deduction for one or no hands touching vault table.

1.00 deduction for spotting assistance during vault.

1.00 deduction for not landing on feet first.

“C” before numbers above denotes “Collegiate”.

Last Updated on 9/18/02

By Peter Jansson

NAWGJ Library Order Form 2002

Name:

Address:

Phone:

Email:

Checks payable to: NAWGJ Library (No Credit Cards Accepted)

To: Judy Dobransky, 3446 Gordon Dr., Sterling Hgts, MI 48310

Home: 586 264-2047 Fax: 586 795-5204 Voice Mail: 586 795-5346

Email: DDobransky@aol.com

#	Item	Price	Ext
---	------	-------	-----

Computer Program:

Gymquest on CD	\$5.00	
----------------	--------	--

Created by Jennifer Graeler (can be downloaded from www.NAWGJ.org)

Video & DVD

Choreography	\$20.00	
Collegiate Routines w/Element Script (DVD)	\$25.00	
Collegiate Routines w/Element Script (VHS)	\$20.00	
Level 7/8 Practice Judging w/ Script (DVD)	\$25.00	
Level 7/8 Practice Judging w/ Script (VHS)	\$20.00	
Level 9/10 Practice Judging w/ Script (DVD)	\$25.00	
Level 9/10 Practice Judging w/ Script (VHS)	\$20.00	
Recognizing Grip Changes w/ Script (VHS)	\$15.00	
Table Vaulting (DVD)	\$25.00	
Table Vaulting (VHS)	\$20.00	
World Series "Son of Series of Series" (DVD)	\$25.00	
World Series "Son of Series of Series" (VHS)	\$20.00	

Technical Items (All are Unofficial)

"All You Need" Judging Aids {J.Adkins}	\$15.00	
2001 - 2005 C/O Flip Book {B.Eberhardt}	\$20.00	
2001 - 2005 JO Element Book {B.Eberhardt}	\$25.00	
C/O Reference Guide {C.Swonger}	\$8.00	
Excel-erated Code 2002 {W.Witten}	\$8.00	
FIG/JO Comparisons {S.Weber}	\$20.00	
Florida Reference Cards {C.McLane}	\$15.00	
Hip Pocket Index {F.Keller}	\$8.00	
JO Code Notes {P.Hickey}	\$15.00	
Master Score Sheet Book {B.Eberhardt}	\$15.00	
Quick Glance Reference (V/B/BB/FX) {D.Baker}	\$10.00	
Shorthand 101 {G.Caspere}	\$10.00	

Sub-Total Column 1

** Embroidered Collar Shirt

Sizes: AS - AXL \$30.00 / Plus 1X - 2X \$32.00

Colors: White, Papaya, Navy, Royal, Light Blue, Dandelion, Dark Green, Twilight, Apricot, Aqua, or Spearmint

#	Item	Price	Ext
---	------	-------	-----

Laminated Cards

Bonus Card {B.Eberhardt}	\$3.00	
Vault Times Card {B.Eberhardt}	\$3.00	
Bars Times Card {B.Eberhardt}	\$3.00	
Beam Times Card {B.Eberhardt}	\$3.00	
Floor Times Card {B.Eberhardt}	\$3.00	
Levels 7/8 Vault Chart {B.Eberhardt}	\$3.00	
Levels 9/10 Vault Chart {B.Eberhardt}	\$3.00	

Clothing

Embroidered Collar Shirt** Color	\$30 - \$32	
Antron Navy Pants (AS - AXXL)	\$25.00	
Antron Navy Shorts (AS - AXXL)	\$17.00	
Antron Navy/White Jackets (AM - AXXXL)	\$35.00	
Element Sweatshirt (AM - AXL)	\$25.00	
Element T Shirt LS (AM - AXL)	\$20.00	
Element T Shirt SS (AM - AXXL)	\$15.00	
Survivor Sweatshirt(AL - AXL)	\$25.00	
Survivor T Shirt LS (AM - AXL)	\$20.00	
Survivor T Shirt SS (AM - AXL)	\$15.00	

Fun Stuff - All with NAWGJ Imprints

Cork Coaster	\$1.00	
Flashlight Keyring	\$2.50	
Lap Blanket (Navy w/ Logo)	\$20.00	
Pen	\$1.00	
Pocket Coolie (Asst Colors)	\$3.00	
Umbrella (Navy/White Stripe)	\$15.00	

Shipping Charges:

\$5.00 Up to \$15.00	
\$6.00 \$15.01 - \$25.00	
\$7.50 \$25.01 - \$44.00	
\$9.50 \$44.01 - \$66.00	
\$12.50 \$66.01 - \$88.00	
\$15.50 \$88.01 - \$110.00	
\$25.00 \$110.01 - \$150.00	

Call Over \$150.00

Total Column 2

Total Column 1

Sub-Total

Shipping

Grand Total

Check #

Cash

Mail Items Yes No



NAWGJ WARMUP ORDER FORM

Date of Order: _____

SOLD TO:
Name: _____

Address: _____

County: _____

Daytime Phone Number: () _____

E-mail Address: _____

SHIP TO: (Fed Ex cannot ship to a PO Box)

Name: _____

Address: _____

County: _____

Phone number at shipping address: () _____
(required for Fed Ex delivery)

PAYMENT ENCLOSED:

☐ Money Order or Check# _____
Make check payable to: Elite Sportswear, L.P.

☐ Visa ☐ MasterCard ☐ NOVUS Cards ☐ American Express
Includes:
DISCOVER, Bravo & Private Issue

Card #: _____ Exp. Date: _____

Card Holder's Name*: _____
*required

Card Holder's Address*: _____
*required

Signature: _____

Please circle size you wish to purchase:

AXS AS AM AL AXL Price: \$73.95

Special Order for larger sizes:

A2XL A3XL Price: \$93.95

_____ **Warm-up Set Price**

_____ **Sales Tax** Please add, state, county & local sales tax
applicable for the state where your order is being shipped.

_____ **Shipping & Handling**

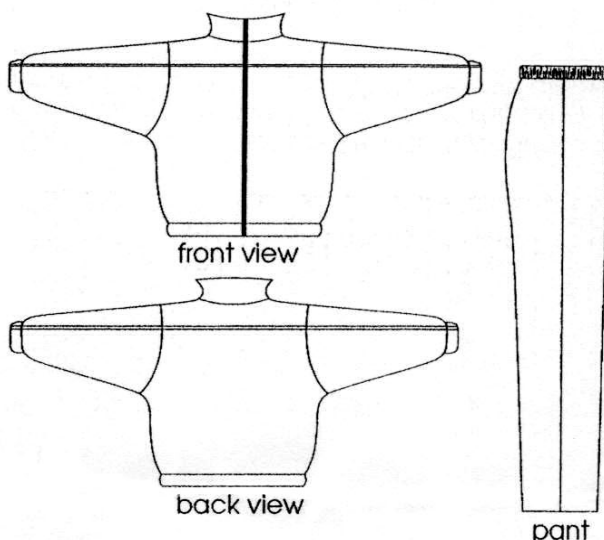
\$5.50 for the 1st item...\$.35 for each additional warm-up set

_____ **Total**

Style: 1776 Warm-up Set. Taslan nylon zip front warm-up jacket with drawcord hem and full cut, straight leg pant with elasticized drawstring waist.

Color: A29 Navy with white binding.

Includes: NAWGJ embroidery.



SIZES	CHEST	WAIST	HIP	TORSO	INSEAM
AXS	31-34	24-26	29-32	51-54	28
ASM	34-36	25-28	31-34	54-57	29
AMD	36-38	26-29	33-36	57-60	30
ALG	38-40	27-30	35-38	60-63	31
AXL	40-42	29-32	37-39	63-66	32
A2XL	42-44	30-34	39-42	66-68	33
A3XL	44-46	31-36	41-44	68-70	34

Orders will be processed randomly. Please note deadlines that must be met for shipping time frame. For sizes A2XL & A3XL, please allow a 4 week delivery from deadline date.

Orders received by August 15 for August 30 shipping.

Orders received by September 15 for September 30 shipping.

Orders received by November 15 for November 30 shipping.

Orders received by January 15 for January 30 shipping.

Orders received by March 15 for March 30 shipping.

Orders received by May 15 for May 30 shipping.

Orders with prepayment must be faxed to GK: 610.921.0208 (24 Hours)

Or mailed to Elite Sportswear, L.P. P.O. Box 16400, Reading, PA 19612-6400.

Phone orders will not be accepted.

We will not accept returns on these warm-up sets since they include customized embroidery.

Changes in the Junior Olympic Program 2002-2003

Compiled by Marian Dykes - 8/7/2002

GENERAL

LEVEL 8 DIFFICULTY RESTRICTIONS

Level 8 gymnasts will be allowed to perform of any "C" element at Level 8. "C" elements will receive "B" Value Part credit and will be eligible to fulfill Special Requirements. Effective August 1, 2002.

START VALUES

The Technical Committee encourages flashing of Start Values or writing of Start Values on competition cards at all optional competitions. Whenever possible, the Meet Director will advise the judges' assignor that this procedure will take place.

APPAREL

Elastic waistbands, traditionally worn as training aids, are considered inappropriate attire (not to include medically necessary bandages), effective August 1, 2002.

PRE-MEET (TIMED) WARM-UP PROCEDURES

- The amount of time for Vault and Floor Exercise pre-meet timed warm-ups is to be determined by the number of athletes in the largest squad of the session multiplied by the allotted time per gymnast. No block time is allowed by individuals or by club on the Vault and Floor Exercise events.
- Bar settings are NOT included in the pre-meet warm-up time.

ONE-TOUCH WARM-UP (30-SECOND TOUCH) PROCEDURES

- The one-touch warm-ups on Vault, Bars and Beam are not required to be conducted in competitive order; however, the first athlete to compete must be given the opportunity to touch first. Athletes will be allowed to take the touch warm-up in any grouping to expedite the one-touch warm-up, but each athlete must still be individually timed 30 seconds on Bars and Beam.
 - For the one-touch warm-up on vault, the athletes may warm-up in any order, but each athlete is still guaranteed a maximum of 2 vaults (Compulsory levels) or 3 vaults (Optional levels).
 - If the one-touch warm-up on Beam is staggered with warm-ups between competitive routines, the one-touch warm-up must be in competitive order.

MATTING

Additional matting of "up to 9 inches" is allowed (any combination of skill cushion and/sting mats) on the allowable competition landing mat.

VAULT

APPARATUS/EQUIPMENT

Each State Administrative Committee has the right to decide if the Level 5, 6, 7 and/or 8 athletes in their state have the choice to use the new vault table for the 2002 Fall season (August 1 - December 31, 2002). The State Administrative Committee must make this decision prior to August 1, 2002.

- If the State Administrative Committee votes in favor of a choice:
 - Both the conventional horse and the new vault table MUST be provided at the designated State Championships that are held prior to January 1, 2003.
 - If a state has no athletes at the levels designated above that require the new vault table, there is no need for the Meet Director to provide one.

Note: If a State allows a choice of vault apparatus for any of the above levels, all meets (qualifying and/or invitational) below the State Championships have the OPTION to provide the vault table and MUST provide the conventional horse. Meet information must indicate the equipment to be provided.

Note: *As the minutes of May 2001 stated, the vault table will be the required apparatus effective January 1, 2003.*

Height: Jr. Olympic athletes may use the vault table at any height, regardless of age division; however, the height must be within a minimum of 100 cm (+/- 1 cm) and a maximum of 125 cm (+/- 1 cm).

Note: The Vault Tables produced by AAI have two pistons, both of which must be set at the same number of notches. Also, the settings on the models made by AAI are different:

- o Conversion kit (retro-fit using old horse base): 125cm = 4 notches
- o New AAI free standing model: 125cm = 5 notches
- o Speith-Anderson and Jantzen-Fritzen models have only one piston and cm markings are on the piston.

Runway: The tape measure is placed at a point even with the front edge of the table (drop a vertical line from the near edge of the Table closest to the board). The runway must be a minimum of 76' and a maximum of 80'.

LEVEL 4 VAULT

The committee discussed the deductions for Level 4 vault. It is recommended that when judging this vault, that each applicable deduction be utilized as listed when a dive roll is performed.

LEVEL 5/6 HANDSPRING VAULT

Add the following deduction for Level 5 and 6 vault, effective August 1, 2002:

- Additional hand placements (taking steps/hops on hands) Up to 0.30
- Delete the 0.50 deduction for "coach standing between the board and vault apparatus" at Level 6, effective August 1, 2002.
- Apply a 2.00 penalty for "Failure to land on the feet first" for Level 5 or 6 for Handspring vaults, effective August 1, 2002.
- Add a 2.00 penalty for assistance by the coach in any phase of the Level 5/6 handspring vault.

Clarification: A maximum deduction of 2.00 would be taken for assistance in the 1st flight phase or 2nd flight phase, or in both flight phases.

Clarification: If, in the attempt to perform a handspring vault, the Level 5/6 gymnast finishes in a sitting/lying position on the vault apparatus, deduct 0.50 for the fall onto the apparatus plus 2.00 for failure to land on the feet first. If the gymnast makes contact with the vault apparatus during the 2nd flight phase, deduct "up to 0.20" for touch/brush or hit on the apparatus.

LEVEL 7 VAULT

The squat, stoop, and straddle vaults are eliminated from the list of allowable Level 7 vaults, effective August 1, 2002. (Deductions for these vaults will remain in the *J.O. Technical Handbook* for those programs that still use these vaults, such as USAG PREP Optional or other organizations.)

LEVEL 9 VAULT

The following Round-off entry vaults are allowed for Level 9 athletes, effective August 1, 2002:

From Group 4: vaults (Flic-flac on) with twists only (no saltos) or RO, flic-flac on -salto off without twist

#4.201 - RO, FF on - Back tuck

#4.304 - RO, FF on - Back pike

#4.305 - RO, FF on - Back layout

#4.312 - RO, FF on - 1/1 twist off

#4.313 - RO, FF on - 1½ twist off

#4.412 - RO, FF on - 2/1 twist off

From Group 5: vaults (RO, flic-flac with ½ turn on) with twists off (no saltos allowed)

#5.201 - RO, FF ½ on - 1/1 twist off

#5.202 - RO, FF ½ on - 1½ twist off

#5.307 - RO, FF 1/1 on - 1/1 twist off

#5.420 - RO, FF ½ on - 2/1 twist off

Reminder: There is no deduction for coach standing between board and vault table for Round-off entry vaults.

VAULTING DEDUCTIONS

While the J.O. Committee discussed the deduction for bent arms on the Tsukahara entry vaults performed on the new Vaulting table, no changes were made to optional vault deductions for 2002-2003.

NEW ELEMENTS FROM THE 2002 J.O. NATIONALS

Add the following elements to the Jr. Olympic Element Supplement:

VAULT:

- S4.607 - Round-off, flic-flac on - ½ turn off to salto forward tucked with ½ turn (Beckman) 10.0
- S2.305 - Front handspring onto board- Front handspring on - Salto forward tucked (Ilg) 9.8

UNEVEN BARS

LEVEL 7 BARS

- Eliminate the Level 7 Bar requirement of a minimum of 8 elements, effective August 1, 2002. Clarification: Effective August 1, 2002, there is no minimum number of elements required at Level 7.
- Add a new Level 7 Bar requirement of a second 360° circling element that finishes in or passes through a clear support, with no minimum angle required. One of the two required 360° circling elements must be an element listed under Groups 3, 6 or 7 in the **FIG Code of Points** or the Jr. Olympic Element Supplement. Effective August 1, 2002. Clarification: The two 360° circling elements may be the same or different. One of these circles must achieve a minimum angle of 60° above horizontal; the other circling element has no angle requirement. Refer to page 32, e in the Jr. Olympic Technical Handbook regarding the technical specifications of clear support.

SPECIAL REQUIREMENTS – 0.20

LEVEL 10

- ❶ 2 bar changes
- ❷❸ 2 different flight elements of B (excluding dismount)
- ❹ Element from Group 3, 6 or 7 minimum B
- ❺ Dismount - minimum of B

LEVEL 9

- ❶ 2 bar changes
- ❷ 1 flight element min. of B (excluding dismount)
- ❸ 1 element with LA turn of 180°, 360°, 540° etc. (excluding mount &/or dismount)
- ❹ Element from Group 3, 6 or 7, minimum of B
- ❺ Dismount - minimum of B

LEVEL 8

- ❶ 1 bar change
- ❷ EITHER 1 flight element min of B (excl. dismount) OR 1 element w/LA turn of 180°, 360°, 540°, etc. (excluding mt & dismount)
- ❸ Element from Group 3, 6 or 7 minimum of A
- ❹ Dismount - minimum of A

CONNECTION VALUE		
LEVEL 10	LEVEL 9	LEVEL 8
C + C = 0.1 C element in the 2 directly connected elements must contain either flight phase or LA turn of at least 180° C + D = 0.1 C element connected to D or E, the C element is not required to have turn or flight D + D = 0.2 All C, D, or E mounts or dismounts may be used for CV	C + C = 0.1 Two different C elements, one or both elements without turn or flight C + C = 0.2 Both C elements with turn or flight. D or E = C	No additive Value at Level 8 C = B
No Additive Value with more than 0.25 deduction		

NEW ELEMENTS FROM THE 2002 J.O. NATIONALS

Add the following elements to the Jr. Olympic Element Supplement:

- S2.101(A)** - Add "also with 1/2 turn"
S2.406 (D) - On HB- Counterswing to front salto stretched with 1/2 turn to catch LB in hang (Cox)
S4.402 (D) - Back giant on HB- hop from regular grip to L-grip in handstand phase (Dochney)
S8.506 (E) - Dismount: Swing down between the bars, swing forward to salto backward tucked with 1/2 twist into salto forward tucked with 1/2 twist (Beckman)

OPTIONAL UNEVEN BARS

- Clarification regarding the Glide straddle or stoop over the LB to catch HB, as listed in the revised *FIG Code* (Jn. 2002) be applied at the Jr. Olympic level, effective August 1, 2002:
 #1.104 A value part Glide on LB, stoop (or straddle) back kip-up to brief rear support (touching LB with back of thighs) with grip change to hang on HB
 #1.204 B value part Glide on LB, stoop (or straddle) back kip-up through clear rear support with grip change to hang on HB
 Note: This element may be performed as a mount or within the exercise.
 Rationale: Previously, the gymnast received deductions for touching the LB with the legs when attempting this element, which was listed only as a "B". Now, if the legs touch the bar, "A" value part is awarded, with no specific deduction for touching the bar with the legs.
- Regarding the performance of a release element: Value Part and Special Requirement credit will be awarded if the gymnast contacts the bar with the hand(s) prior to a fall, effective August 1, 2002.
- Clarification of elements with hop-grip change and turns: elements with hop-grip change are considered flight elements.**

Add the following to the *Jr. Olympic Technical Handbook*, pg. 82 B. 3.

Add f. For elements with a hop-grip change and a LA turn, the hop grip change to a different grip must be completed prior to the initiation of the turn in order to be considered flight. (Exception-back giant hop full)

- Add the following compositional deduction for Level 10: "Choice of release elements not up to the competitive level "up to 0.20", effective August 1, 2002.

The following examples were suggested:

If the only release elements in the routine were:

- o Counterswing to straddle back with flight over LB (B) and Underswing or long swing on HB with ½ turn and flight over LB to hang (B) - apply the maximum deduction of 0.20
- o Tkatchev (D) and long swing forward on HB with ½ turn (bail ½) and flight to handstand on LB (D) – no deduction

When applying this deduction, consider not only the difficulty value of the release element, but also the type of release elements and the use of release elements in direct connections with skills of value

- The current values of the specific release elements that were listed in the Jr. Olympic Committee's May 2002 minutes will not change.

* FINAL DECISION: NO CHANGE IN VALUES FOR RELEASE ELEMENTS

MISCELLANEOUS UNEVEN BAR TECHNIQUE CLARIFICATIONS

Evaluation of turns on one arm finishing in an L or mixed-L grip (Healy technique) The Jr. Olympic Committee has expressed concern regarding the lenient evaluation of elements with full turn on one arm (Healy turn). The Technical Committee will encourage through continued education the application of not only the deduction for late completion of the turn but also deductions for body position faults.

Clarification of required technique for element #4.101 (A-value): If a swing forward with ½ turn is completed below 45° from vertical, it is considered an element with no value; therefore, would not receive the Special Requirement of LA turn for Level 9. If the forward swing were under horizontal, a specific execution deduction of 0.10 would also be applied.

Clarification of required technique for circling elements to handstand, also with ½ turn:

- All circling elements must be completed to within 10° of vertical in order to receive value part credit as listed in FIG Code or Jr. Olympic Element Supplement.
- If the circle never reaches the handstand phase and a turn occurs on the upswing more than 10° from vertical, award the value for the actual element performed.

Example:

The gymnast attempts a clear hip circle or piked sole circle but fails to attain the handstand phase (within 10° of vertical on the upswing), and then performs ½ turn. This would be considered either a "B" underswing with ½ turn to clear support (#3.202) or an "A" underswing with ½ turn to hang (#3.102) depending on actual element performed.

Example:

The gymnast attempts a giant circle backward but fails to attain handstand phase and then performs a ½ turn between 45° to 11° from vertical. This would be considered an "A" element - #4.101 (swing forward with ½ turn above HB height, circa 45° from vertical)

Clarification of "C" element #3.304 - Uprise backward to clear hip circle to handstand on HB: This element is considered one "C" element. If, when performing this element, the clear hip circle does not attain the handstand phase (within 10° of vertical), the skill is evaluated as two "B" elements (back uprise to clear support and clear hip circle).

Note: If this element is performed at Level 7, it is considered two "B's", regardless of whether or not the clear hip circle attained the handstand position.

BALANCE BEAM

EQUIPMENT

Clarification: An adjustable beam must be provided at all USAG sanctioned events for the Jr. Olympic program.

OPTIONAL BALANCE BEAM

- The hold Special Requirement on Beam is eliminated, effective August 1, 2002.
- All turns on Beam that are presently described as requiring a leg position maintained at “above horizontal throughout the turn” be described as “at or above horizontal throughout the turn” to receive Value Part credit as listed in the *FIG Code*. Effective August 1, 2002 for Jr. Olympic competition only. *Note: Refer to the Jr. Olympic Technical Handbook, pages 113 & 140 for additional technical requirements for these elements.*
- The Junior Olympic Program will use the FIG description of artistry for optional competition, as presented in the 2002 revision of the *FIG Code of Points*: Artistry of presentation throughout the exercise, showing qualities of:
 - o Elegance and expression of personal style
 - o Entertainment value
 - o Originality of choreography in elements and combinations.
- The Technical Committee and the Jr. Olympic Committee agree that the elimination of **Tempo (rhythm) deduction for direct connection of two or more elements in a series on Beam** is NOT to the benefit of the Jr. Olympic athletes. There is no change in this deduction at this time. Reminder: The tempo deduction of “up to 0.10” is applied when the rhythm of the connection is continuous but slow. It is considered a separate rhythm deduction and is not applied to either the first or second element.
- The FIG has eliminated the tucked Chen flic (#7.312). The Technical and Jr. Olympic committees have decided to retain this element for the Jr. Olympic program with the following technical requirements: the gymnast must show a 90° angle in both the hips and the knees, then an opening/stretching of the legs/body prior to the swing down. **The tucked Chen flic will be added to the Jr. Olympic Element Supplement as S7.312.**
- The FIG has changed the Flic-flac $\frac{1}{4}$ and $\frac{3}{4}$ (Omelianchik) to Group 5 - Holds (#5.308 and 5.408). The Technical and Jr. Olympic committees have decided to retain these two elements in Group 7 (Walk-overs, Cartwheels, etc.), with no hold requirement. They will be added to the Jr. Olympic Element Supplement as: **#S7.310 Flic-flac with $\frac{1}{4}$ turn to side handstand and #S7.410 Flic-flac with $\frac{3}{4}$ turn to side handstand.**
- The FIG is now listing the tuck jumps and wolf jumps under the same number. The Technical Committee decided to keep the tuck and wolf jumps as different elements for the Jr. Olympic program. In the Jr. Olympic Element Supplement, the wolf jumps will be listed under the following numbers:
 - o S2.111 Wolf hop (one foot take-off)
 - o S2.211 Wolf jump (two foot take-off)
 - o S2.311 Wolf hop or jump with $\frac{1}{2}$ or $\frac{3}{4}$ turn, also landing in front support or to hand support with swing down to cross straddle sit.
 - o S2.511 Wolf hop with $\frac{1}{1}$ turn or wolf jump with $\frac{1}{1}$ - $1\frac{1}{2}$ turn

New Elements from the 2002 J.O. Nationals

Add the following elements to the Jr. Olympic Element Supplement: S9.409 (D) - Dismount: Gainer salto piked with $\frac{1}{1}$ twist at the end of the beam -facing out (Rinaldo)

FLOOR EXERCISE

EQUIPMENT

Page 133, V. Coach on the Floor Exercise Mat/Spotting regulations: Add E. It is permissible for a coach to go onto the Floor Exercise mat during the exercise if an object (such as metal hair clips, eyeglasses, etc.) that may impede or endanger the athlete has fallen onto the mat. There will be no deduction.

LEVEL 4

Recommendation to allow 1-3 steps into the Round-off, flic-flac. Effective 8/1/02

Dear Judge...

Oh judge, dear judge
hello, its me
I'm way down here
only 4 foot 3.

My knees are knocking
I hope you don't see.
I look up at you
you smile at me.

It's my turn on beam
now there's no escaping.
A "9" would be nice
see, my grandma is taping.

I know I'm wobbly
but here's a quiz-
Do you know how thin
this darn thing is???

Oh judge, dear judge
can you cut me some slack?
I wiped out in warm-ups
and hurt my back.

You signal you're ready
for me to begin.
I face you, salute you
and flash my best grin.

These bars feel good
I must keep my grip.
Did I happen to mention
I have a big rip?

It's over, I did it
that wasn't so bad.
But I have to admit
I really am glad.

Oh judge, dear judge
it's my turn on floor.
And I know you've heard
my music before.

But you only smile
as I flip and I leap.
How is it that your
composure you keep?

Out of bounds, you say
on two of my passes?
Well, I think that line judge
needs some new glasses

Okay, yes, okay
I'm sure you are right
But the floor is too springy
it messed up my flight

Oh judge, dear judge
did you see that vault?
You need to know
it wasn't my fault

The board was too close
the horse set too high.
But you just smiled
when I walked by.

You sit there for hours
and watch us compete.
You nod and encourage
you don't miss a beat.

You look so regal
in your navy blue.
Oh judge, dear judge
we appreciate you!!!

Published in the 2001 The Cup
Program hosted by GTCO,
Franklin, OH
Reprinted with permission

OPTIONAL FLOOR EXERCISE

Special Requirements

- NO CHANGES

While the FIG has eliminated the Special Requirement of an acrobatic series on floor exercise, the Technical Committee decided to maintain the six Special Requirements presently required on Floor Exercise for the Jr. Olympic program.

Floor Exercise Salto clarification:

Salto elements landing in a sitting, prone or split-sit position are not considered saltos. If the salto element lands on two feet, or lands on one foot and then lowers with control to one knee, it is considered a salto and will be eligible to fulfill Special Requirements and/or Connection Value.

- All turns on Floor Exercise that are presently described as requiring a leg position maintained at "above horizontal throughout the turn" be described as "at or above horizontal throughout the turn" to receive Value Part credit as listed in the *FIG Code*. Effective August 1, 2002 for Jr. Olympic competition only.

Note: Refer to the Jr. Olympic Technical Handbook, pages 113 & 140 for additional technical requirements for these elements.

- The Junior Olympic Program will use the FIG description of artistry for optional competition, as presented in the 2002 revision of the *FIG Code of Points*: Artistry of presentation throughout the exercise, showing qualities of:

- January 2003 15
o Elegance and expression of personal style
- o Entertainment value
- o Originality of choreography in elements and combinations.

NAWGJ National Governing

held in California in June of 2001. Four hundred twenty judges attended. Eighty Level 10's recertified. Symposium Director Ellie Chynoweth has offered to continue in that capacity.

MOTION: NAWGJ will decline the offer of the Symposium Director to continue in the position under the terms outlined by her. (Grenfell/Sroufe—carried, Reg 1 abstained)

The President appointed a Symposium Committee (Grenfell, Lord, Geel and Packwood). Grenfell will research requirements for site selection and distribute to RJDs. The timeframe will be either of the two weekends following July 4, 2005.

Hall of Fame and Life Memberships

MOTION: NAWGJ accept the Hall of Fame criteria and application form developed by Carole Liedtke. (Liedtke/Ruegg – carried)

MOTION: NAWGJ accept the Life Membership criteria and nomination form developed by Carole Liedtke. (Liedtke/Geel – carried)

MOTION: Amend the Hall of Fame motion to read nomination form instead of application form. (Grenfell/Lord – carried)

Scholarship

MOTION: Present the idea of a NAWGJ Scholarship to the SJDs at their meeting on Saturday. (Ruegg/Sroufe – carried)

NOTE: This proposal did not receive the support of the SJDs

Guest Speaker — Attorney Arthur Melendrez addressed the Board about legal issues facing organizations today.

State Judging Director's Guide

MOTION: Redo the Equipment Inventory Report form to reflect the disposal of equipment. (Grenfell/Martin – carried) Martin and Lord were appointed to revise.

MOTION: The Equipment Inventory Report form will require reporting of all expenditures over \$200.00. (Rager/Martin – carried 5-3)

MOTION: A judge should be a member of NAWGJ for 90 days prior to the sending of ballots to be eligible to vote in elections. (Sroufe/Rager – carried)

MOTION: To define the term "in good standing", a candidate must be in good standing under the canons and disciplinary rules of the NAWGJ Code of Professional Responsibility. (Grenfell/Panichas – carried)

MOTION: A proxy at the National Governing Board Meeting must be an SJD; a proxy at a Regional Governing Board Meeting must be a State Governing Board member. (Rager/Sroufe – carried) **NOTE:** Until further action by the Board, a proxy does not vote.

MOTION: Exceptions to the proxy motion must be approved by the President at the National level, and the RJD at the Regional level. (Ruegg/Panichas – carried)

MOTION: The Regional Judging Director shall send the

ballots for SJD elections. (Grenfell, Lord – carried)

MOTION: A current officer must be up to date with all required reports to be eligible to run for re-election. (Grenfell/Sroufe – carried)

MOTION: The Vice President shall send the ballots for RJD elections. (Liedtke/Panichas – carried)

Library — The Library will have two new educational tapes, one on collegiate gymnastics and one on the new vault apparatus. A new order blank will be posted on the website around August 1st. NAWGJ will have a booth at USAG Congress. States or Regions with fundraising items may apply to sell these items at the booth. New projects include a 7/8 film, a 9/10 film and a film from World Championships.

National Judges' Cup — Patty Shipman will present her report on Saturday at the SJD meeting. The cup will be held January 3-5, 2003 at Rebounders Gymnastics in Landover, Maryland. The host hotel will be the Doubletree Hotel, 5 minutes away from the meet site. Baltimore/Washington Int'l Airport is the closest airport. The state team competition will again be Level 7. The Rebounders website address is www.rebounders.com.

New Business

Financial Procedures

MOTION: Any depreciable expenditures over two hundred dollars (\$200) must be made in consultation with the State Governing Board and require written approval of the RJD. (Ruegg/Packwood – carried)

MOTION: State Governing Boards shall approve the budget for a State Judges Cup prior to the event. (Lord/Rager – carried)

MOTION: The SJD will file timely reports when fundraisers and special events are held and obtain a second signature as required. (Liedtke/Geel – carried) Amendment to include special events (Lord/Rager – carried)

MOTION: SJD Expenditures incurred exceeding one hundred dollars (\$100) for non-NAWGJ meetings or activities must be made in consultation with the State Governing Board and require written approval of the RJD. (Liedtke/Sroufe – carried 7-2) **NOTE** – All expenses for duties of the office must be paid or allowed for before non-NAWGJ items can be paid.

MOTION: Duties of the RJD will include: Any depreciable expenditures over five hundred dollars (\$500) must be made in consultation with the Regional Governing Board and with written approval of the President. (Panichas/Rager – carried)

MOTION: Duties of the Treasurer will include: Any depreciable expenditures over five hundred dollars (\$500) must be made with the written approval of the President. (Panichas/Ruegg – carried)

MOTION: Duties of the Vice President will include: Any

Board Minutes Continued

depreciable expenditures over five hundred dollars (\$500) must be made with the written approval of the Treasurer. (Panichas/Rager – carried)

MOTION: Duties of the President will include: Any depreciable expenditures over five hundred dollars (\$500) must be made with the written approval of the Treasurer. (Panichas/Liedtke – carried)

MOTION: Duties of the At-Large Directors will include: Any depreciable expenditures over five hundred dollars (\$500) must be made with the written approval of the Vice President. (Panichas/Rager – carried)

MOTION: In the event that the appropriate director cannot be contacted for financial approval, contact the Treasurer. (Ruegg/Martin – carried)

MOTION: Duties of the RJD will include: Expenditures incurred by the Regional Judging Director exceeding five hundred dollars (\$500) for non-NAWGJ meetings and activities must be made in consultation with the Regional Governing Board and with written permission of the President. (Panichas/Ruegg – carried)

MOTION: Duties of the Executive Officers and At-Large Members of the National Governing Board will include: Expenditures incurred by the officer exceeding five hundred dollars (\$500) for non-NAWGJ meetings and activities must be made with written approval of the appropriate officer. (Panichas/Rager – carried)

MOTION: Duties of the RJD will include: The Regional Governing Board will approve the budget for any Judges' Cup or other special event prior to the event. (Lord/Packwood – carried)

MOTION: Duties of the RJD will include reviewing the tri-annual financial reports (Grenfell/Panichas – carried) Carole Liedtke, Pat Panichas and Robin Ruegg will establish guidelines for reviewing financial reports.

MOTION: Duties of the Secretary/Treasurer will include reviewing the financial reports of Executive Officers and At-Large Directors. (Sroufe/Panichas – carried)

MOTION: Any gift or donation costing over one hundred dollars (\$100) requires the approval of the appropriate board. (Liedtke/Martin – carried 9-1)

USAIGC — There was discussion concerning the Proposals for the Optional Only Women's Program of the USAIGC with regard to officials' fees. NAWGJ supports and services all organizations promoting gymnastics competition for girls and women and looks forward to working with USAIGC as its assignor of choice.

MOTION: We as a board have reviewed the USAIGC officiating proposals and have a number of concerns we would like our President to discuss with a USAIGC representative. (Ruegg/Liedtke – carried)

MOTION: NAWGJ will express the following concerns:

- 1) NAWGJ does not encourage one judge panels.
 - 2) NAWGJ supports a fee structure that considers education, experience and ratings.
 - 3) NAWGJ supports a fee structure wherein judges of women's gymnastics are paid no less than judges for men's gymnastics.
- (Ruegg/Lord – carried)

Compensation Package — The Regions will present proposals to the President for her meeting with USAG personnel regarding the new compensation package for judges.

Nettie Awards — The Nettie Award nominees were displayed and voted on. The awards will be presented at the SJD meeting on Saturday.

Meeting for 2003 — The SJD's will vote on the choices of meeting at Championships of the USA or meeting the weekend after on the East Coast. (They voted not to meet at Championships of the USA.)

The meeting was adjourned 9:00 p.m. Friday, June 28, 2002 by the President

Respectfully submitted,
Judy Grenfell, Vice President

Minutes read and approved,
date _____
Carole Ide, President



Rules & Policies is now online at
<http://www.usa-gymnastics.org/women/rules-and-policies/>

The Women's Rules and Policies book is now online in .pdf format. This format allows you to read and print the documents while maintaining the original format. You will need Adobe Acrobat Reader installed on your computer to access this document. You can download it free.

Professional members can request a bound book at no charge from USA Gymnastics Member Services.



Message from the President

By Carole Ide

It is the mission of the National Association of Women's Gymnastic Judges (NAWGJ) to provide professional development for its members and to support and promote women's gymnastics in the United States. We wish to continue this commitment to the athletes and in cooperation with all organizations.

NAWGJ, as a *service organization* has supplied judges to numerous organizations as requested. These include USAG, NCAA, individual universities and colleges, AAU, National Federation of High Schools, SOKOL, USAIGC, and the YMCA. This is part of our mission statement. We have, at times, negotiated fees with some of the above organizations. Although we do not always participate in negotiations with each organization, we continue to service that organization as requested.

NAWGJ will continue to offer opportunities to



judges and support each individual as an independent contractor, deciding whether or not to accept an assignment as offered.

As officials, we take our responsibilities seriously and spend many hours continuing our education in the sport. We all understand how important it is to the athlete to receive the correct score. Based upon your own experi-

ences you may or may not be comfortable judging on a one judge panel, judging a marathon meet with minimum break time or riding in a car for five or six hours to judge a 2.5 hour session. Each of you as individual judges will make your own decision as to what works for you in that regard.

The NAWGJ will continue to work with all organizations to make the competition experience positive for all involved – athletes first, and judges as support personnel- to create a fair and equitable experience for all.



National
NAWGJNews

8660 New Carlisle Road
New Carlisle, OH 45344